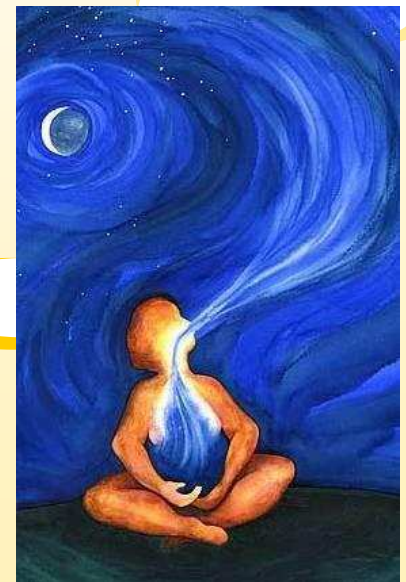


# The Spring Handbook

## Youth Ministry at Christ Community Fellowship



“But those who drink the water I give will never be thirsty again. It becomes a fresh, bubbling spring within them, giving them eternal life.”  
John 4:14

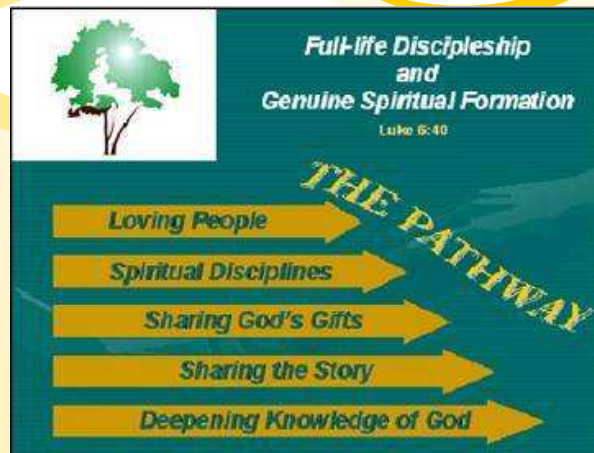
## Ministry Model

### Christ Community Purpose:

The purpose of Christ Community Fellowship is to glorify and exalt God as we make disciples of Jesus Christ according to His Word by edifying believers and evangelizing unbelievers.

### A Disciple:

A disciple is one who through God's grace loves Jesus Christ and follows Him in obedience, prayer and the Word. The spiritual life, character, joy, service and witness of a disciple flow out of a growing personal relationship with the Lord.



Christ Community Fellowship  
160 Singleton Road  
Saver PA 16055  
Phone: 724.353.1001  
Website: [www.ccfriends.org](http://www.ccfriends.org)  
E-mail: [kyle@ccffriends.org](mailto:kyle@ccffriends.org)

## Volunteer Requirements

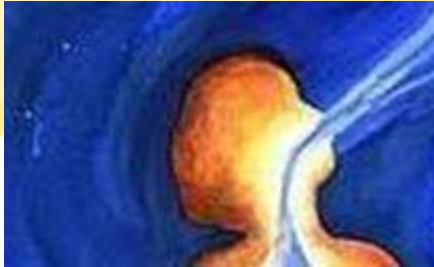
- Must have been attending or closely associated with Christ Community Fellowship for at least six months prior to involvement in/at *The Spring*.
- Must be able to provide two creditable references to testify honestly about your character. (If a character issue would come up either in a background check or from a reference, it shall be discussed in private with the Director of Student Ministries and a CCF Elder prior to any involvement at *The Spring*.)
- Must have a state criminal and child abuse background check.
- Must be able to express your current spiritual journey. This would include:
  - > Story of conversion
  - > Present steps to spiritual health
  - > Your intention to guide students spiritually



## Vision

To establish a thriving youth ministry that is:

- Socially connected
- Intergenerational
- Theologically grounded
- Ultimately helping each other experience spiritual formation
- **Building kingdom in the community**



## Goal

To provide students a spiritual community that is transformed in the image of Christ and holistically connects their world with their faith.

**We are to be lovers of people, not some, but all and not in part, but in whole.**



## Ministry Elements

### Connection with the Spiritual/Transformational

We aim to provide students a legitimate and continuing connection to the Lord and his Spirit. This is done through:

- Theological instruction: Teaching who God is
- Multi-sensory worship experiences
- Small groups and reflection
- Practical faith experiences

### Diversity/Intergenerational

We aim to provide our students a place that is filled with people, ideas and experiences different from their own. This is important so that students can honestly and appropriately connect their faith with their world.

### Experiential

We aim to provide students a way to engage all of their senses while engaging their faith through:

- Leadership games
- Art work: Painting, sculpturing, earth works, etc.
- Multi-dimensional worship environments
- Community service/engagement

### Practical Application

We aim to provide students an opportunity to make a difference and offer hope in their community and their world. The goal is to offer experiences that teach them to engage culture and the world with their faith and not run from it. Asking two questions of programs and teaching:

- How does it affect, connect with and cause change in a student's life?
- How does it help the community?

## Student Needs

### Depth

They need to experience deeper teaching than what their world provides them. However, this must connect the spiritual to everyday life without being cookie cutter or over their head.

### Consistency

We need to be there day in and day out, real and honest. Practicing what we preach.

### A Place

A place to call their own and form out of their own identity.

### Self-expression

They need opportunities to be able to express themselves and their faith as it grows in a safe place with unique avenues. This could come through service projects, art, music or another form.

### Connection

With other Christian peers they can be connected as both walk the Christian life. Supported by mentors who are older, with different life experiences, they can continue on the journey as well.

### Safety

**The safety of our students is priority one.** We seek to provide an emotionally and physically safe environment for all students. God requires and parents trust us to protect and help foster the best future possible for their children.

Kyle (and Danielle) Bartholic  
Director of Student Ministries